

Morskate®

Gedreven door techniek



De status van een machine op je smartphone?

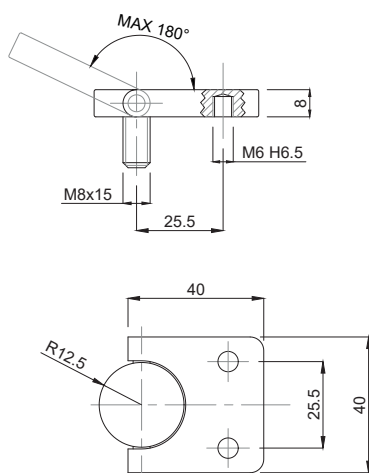
De Beegle: ons plug & play machine monitoring systeem

Meer weten? www.beegle.nl

Morskate®

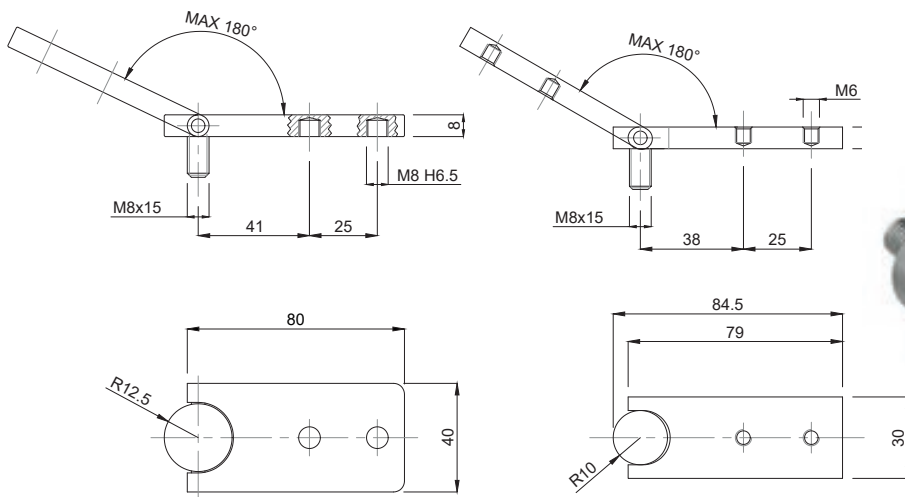


Caratteristiche: CERNIERE LUCIDE E SABBIAATE
Features: POLISHED AND SANDBLASTED HINGES



CODICE - CODE	descrizione - description
60080L	CERNIERA PER PORTE LUCIDA 40X40
60080S	CERNIERA PER PORTE SABBIAATA 40X40

- Materiale: acciaio inox AISI 304 con fissaggio interno tramite 2 fori M6; perno M8
- Material stainless steel 1.4301 hinge with inside fixing system through holes M6; screw M8
L= polished surface finishing S= sandblasted surface finishing



CODICE - CODE	descrizione - description
60085L	CERNIERA PER PORTE LUCIDA 30X80
60085S	CERNIERA PER PORTE SABBIAATA 30X80
60090L	CERNIERA PER PORTE LUCIDA 40X80
60090S	CERNIERA PER PORTE SABBIAATA 40X80

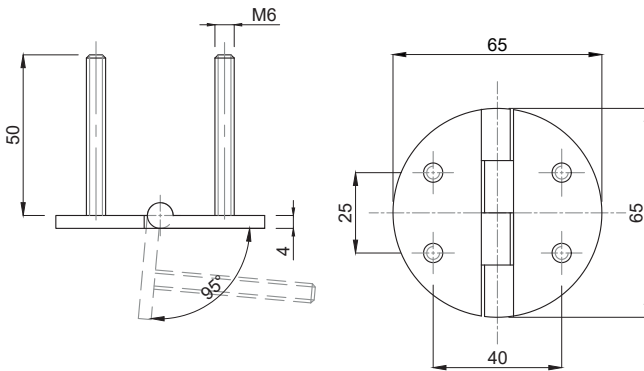
- Materiale: acciaio inox AISI 304 con fissaggio interno tramite 2 fori M8; perno M8
- Material stainless steel 1.4301 Hinge with inside fixing system with two holes M8; screw M8
L= polished surface finishing S= sandblasted surface finishing

Cerniere Inox

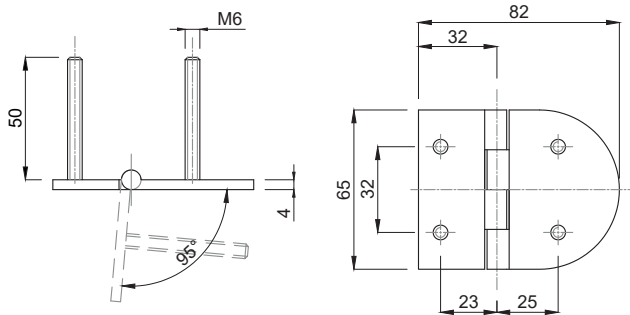
ACCESSORI

Caratteristiche: CERNIERE LUCIDE E SABBIAITE

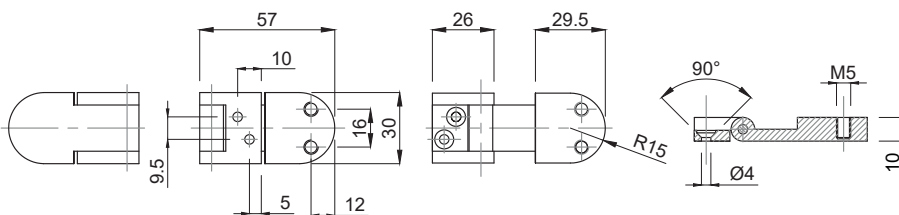
Features: POLISHED AND SANDBLASTED HINGES



CODICE - CODE	descrizione - description
60060L	CERNIERA CON PERNI PER PORTELLI LUCIDA 65x65
60060S	CERNIERA CON PERNI PER PORTELLI SABBIAIA 65x65

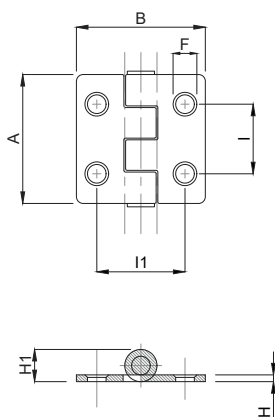


CODICE - CODE	descrizione - description
60070L	CERNIERA CON PERNI PER PORTELLI LUCIDA 65X82
60070S	CERNIERA CON PERNI PER PORTELLI SABBIAIA 65X82



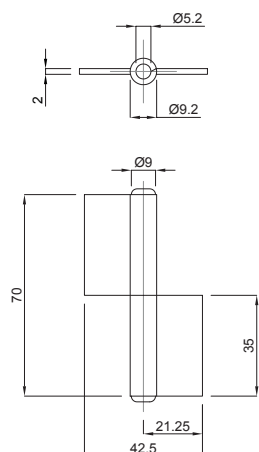
CODICE - CODE	descrizione - description
60050L	CERNIERA INOX PER PORTELLI LUCIDA 57X30
60050S	CERNIERA INOX PER PORTELLI SABBIAIA 57X30

• Materiale: acciaio inox AISI 316; perno di rotazione in acciaio inox; fissaggio tramite 4 perni M6; angolo di rotazione 95°
 Material: stainless steel 1.4401
 Stainless steel drawbolt; fixing through N°4 screws M6; maximum angle of rotation 95°
 L= polished surface finishing
 S= sandblasted surface finishing

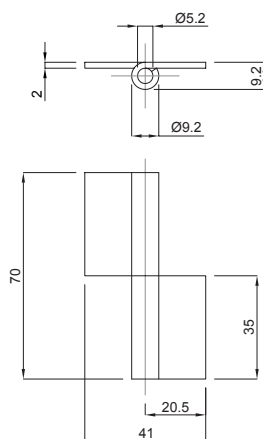


CODICE - CODE	descrizione - description	DIMENSIONI PRINCIPALI - MAIN DIMENSIONS						
		A	B	I	I1	F	H	H1
60020	CERNIERA INOX 38X38	38	38	20,5	26	5,5	2	9,5
60030	CERNIERA INOX 37X48	37	48	22	36	5,5	2	9,5

- Materiale: acciaio inox AISI 304. perno di rotazione in acciaio inox; fissaggio tramite i fori svasati. Angolo di rotazione massimo 270°
- Material: stainless steel body 1.4301; stainless steel drawbolt. Maximum angle of rotation 270°



CODICE - CODE	descrizione - description
60110	CERNIERA INOX A SALDARE SFILABILE D 9,2 CON ALETTA CENTRALE



CODICE - CODE	descrizione - description
60120	CERNIERA INOX A SALDARE SFILABILE D 9,2 CON ALETTA SFASATA

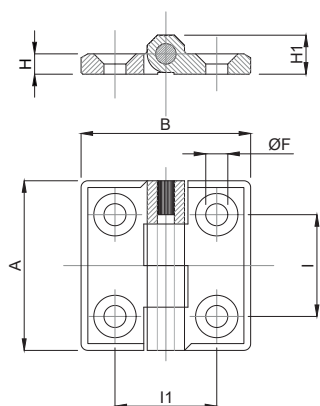
- Materiale: acciaio inox AISI 304; perno di rotazione in acciaio inox; fissaggio tramite saldatura
- Material: stainless steel 1.4301 stainless steel drawbolt; fixing through welding

Cerniere Inox

ACCESSORI

Caratteristiche: CERNIERE LUCIDE, SABBIAE E VERNICIATE

Features: POLISHED, SANDBLASTED AND PAINTED HINGES



CODICE - CODE	descrizione - description	DIMENSIONI PRINCIPALI - MAIN DIMENSIONS						
		A	B	I	I1	F	H	H1
60000/2L	CERNIERA INOX 39X39 lucida	39	39	25	25	5,5	4	9
60000/2S	CERNIERA INOX 39X39 sabbiata	39	39	25	25	5,5	4	9
60010/1L	CERNIERA INOX 50x50 lucida	50	50	30	30	6,5	6	12
60010/1S	CERNIERA INOX 50x50 sabbiata	50	50	30	30	6,5	6	12
* 60015/1L	CERNIERA INOX 60x60 lucida	60	60	36	36	8,5	8	15
* 60015/1S	CERNIERA INOX 60x60 sabbiata	60	60	36	36	8,5	8	15

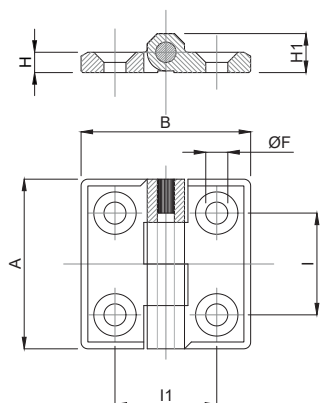
Materiale: acciaio inox AISI 304.
Material: stainless steel 1.4301

* Materiale: acciaio inox AISI 316.
Material: stainless steel 1.4401

Cerniere Acciaio Verniciato

Caratteristiche: CERNIERE VERNICIATE E CROMATE

Features: PAINTED AND CHROME HINGES

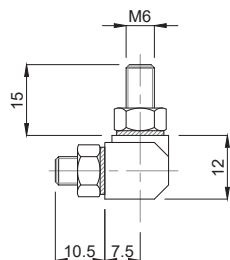
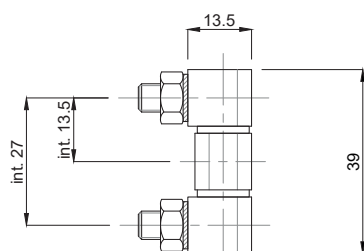


CODICE CODE	DESCRIZIONE DESCRIPTION	DIMENSIONI PRINCIPALI - MAIN DIMENSIONS						
		A	B	I	I1	F	H	H1
60000/2V	40x40 verniciata	40	40	25	25	5,5	4	9
60000/2C	40x40 cromata	40	40	25	25	5,5	4	9
60010/1V	50x50 verniciata	50	50	30	30	6,5	6	12
60010/1C	50x50 cromata	50	50	30	30	6,5	6	12
60015/1V	60x60 verniciata	60	60	36	36	8,5	8	15
60015/1C	60x60 cromata	60	60	36	36	8,5	8	15

Materiale:
 . Perno in acciaio Inox AISI304
 . Alette in Lega di ZAMA (Ferro)
 Trattamenti:
 . Verniciatura Nera
 . Cromatura

Materials:
 . Stainless Steel AISI304 Pin
 . Steel flap of a hinge
 Treatment:
 . Black Painted
 . Chrome

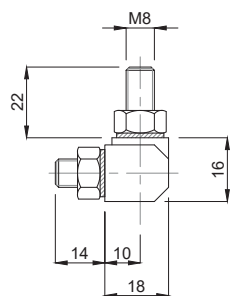
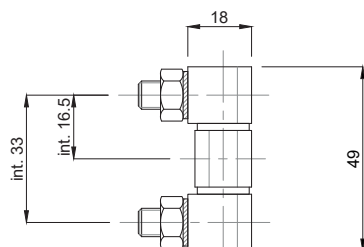
ACCESSORI



CODICE - CODE	descrizione - description
60040	CERNIERE PER PORTELLI 39x13,5

• Materiale: acciaio inox AISI 303
Finitura: Sabbiata

• Material: stainless steel 1.4305
Finish: Sandblasted



CODICE - CODE	descrizione - description
60042	CERNIERE PER PORTELLI 49x18

• Materiale: acciaio inox AISI 303
Finitura: Sabbiata

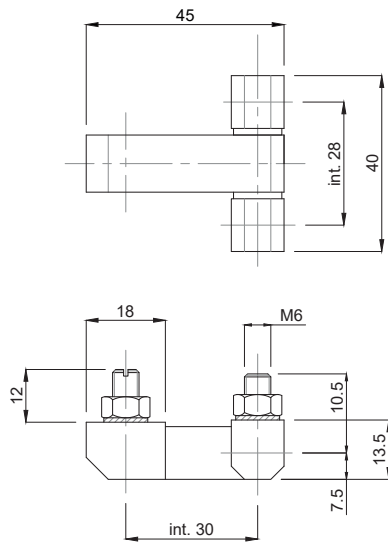
• Material: stainless steel 1.4305
Finish: Sandblasted

Cerniere Inox

ACCESSORI

Caratteristiche: CERNIERE PER PORTELLI

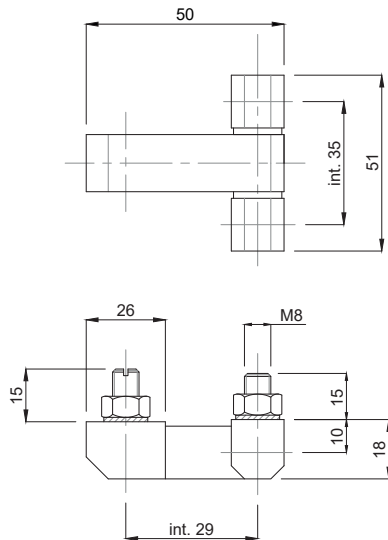
Features: HEAVY DUTY HINGES



CODICE - CODE	descrizione - description
60044	CERNIERE PER PORTELLI 40X45

- Materiale: acciaio inox AISI 303
- Finitura: Sabbiata

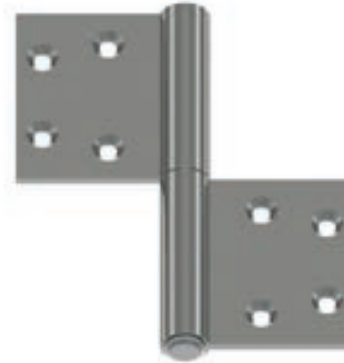
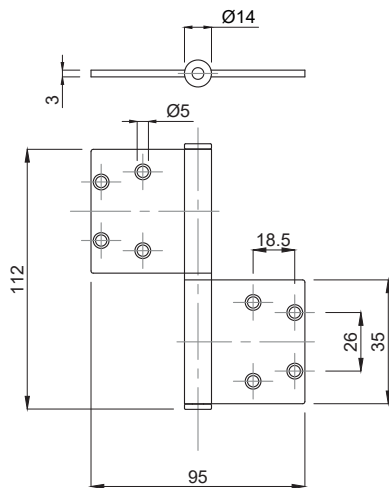
- Material: stainless steel 1.4305
- Finish: Sandblasted



CODICE - CODE	descrizione - description
60046	CERNIERE PER PORTELLI 51x50

- Materiale: acciaio inox AISI 303
- Finitura: Sabbiata

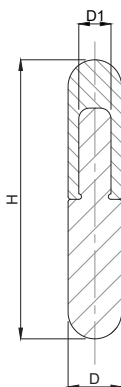
- Material: stainless steel 1.4305
- Finish: Sandblasted



CODICE - CODE	descrizione - description
60100	CERNIERA INOX SFILABILE D14 CON FORI

- Materiale: acciaio inox AISI 304; fissaggio tramite 8 fori d.5
- Material : stainless steel 1.4301
Fixing through nr 8 holes ø5

Caratteristiche: CERNIERA SALDABILE
Features: WELDING HINGE



CODICE - CODE	descrizione - description	D	D1	H
60130	CERNIERA INOX A SALDARE SFILABILE D.8	8	5	42
60140	CERNIERA INOX A SALDARE SFILABILE D.10	10	6	52
60150	CERNIERA INOX A SALDARE SFILABILE D.13	13	8	72
60160	CERNIERA INOX A SALDARE SFILABILE D.16	16	10	82

- Cerniera sfilabile; fissaggio tramite saldatura
Materiale: acciaio inox AISI 304 finitura: tornita fine ; finitura sabbiata a richiesta
- Extractable hinge; fixation through welding
Material: stainless steel 1.4301: surface turned (on request sandblasted or polished)

Morskate®

Gedreven door techniek



Any questions? Please contact us.

Morskate Aandrijvingen BV

Oosterveldsingel 47A
7558 PJ Hengelo (Ov)
The Netherlands

NL

T +31 (0)74 - 760 11 11
info@morskateaandrijvingen.nl
www.morskateaandrijvingen.nl

DE

T +49 692 - 222 34 95
info@morskateantriebstechnik.de
www.morskateantriebstechnik.de

EN

T +31 (0)74 - 760 11 11
info@morskatedrivetechnology.com
www.morskatedrivetechnology.com